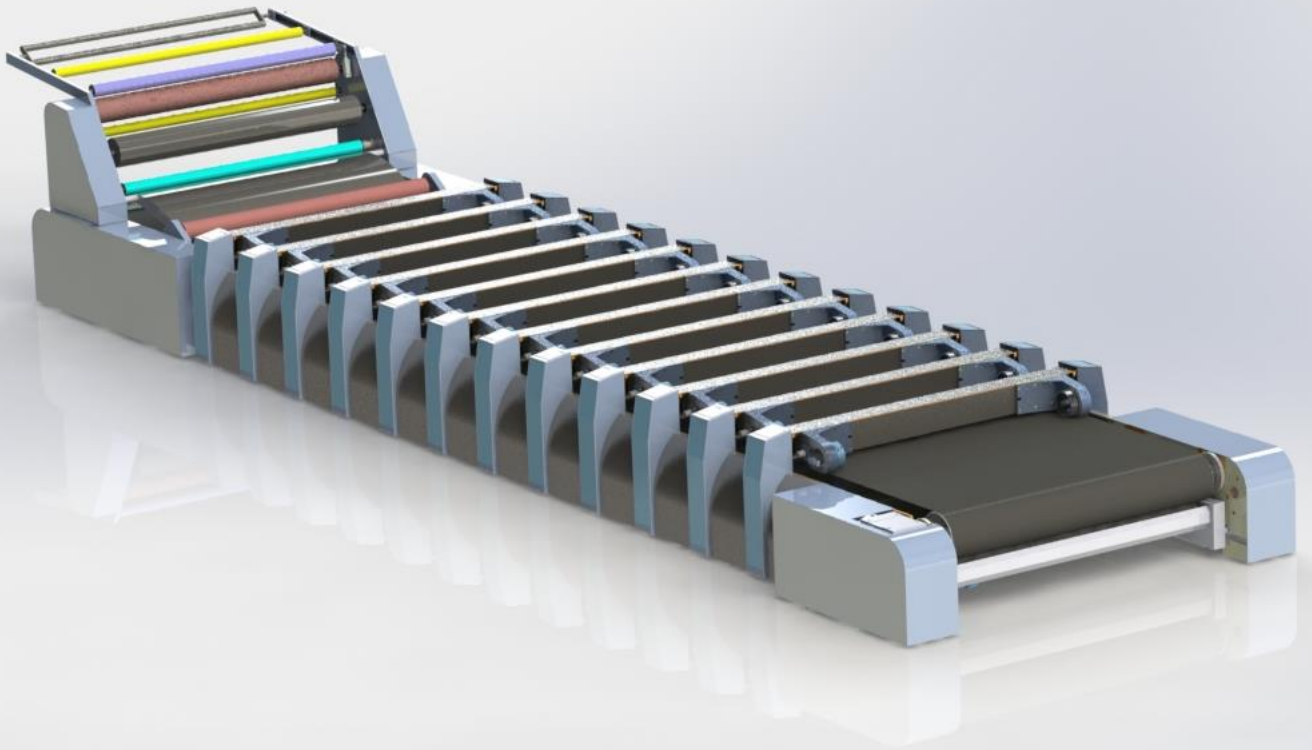
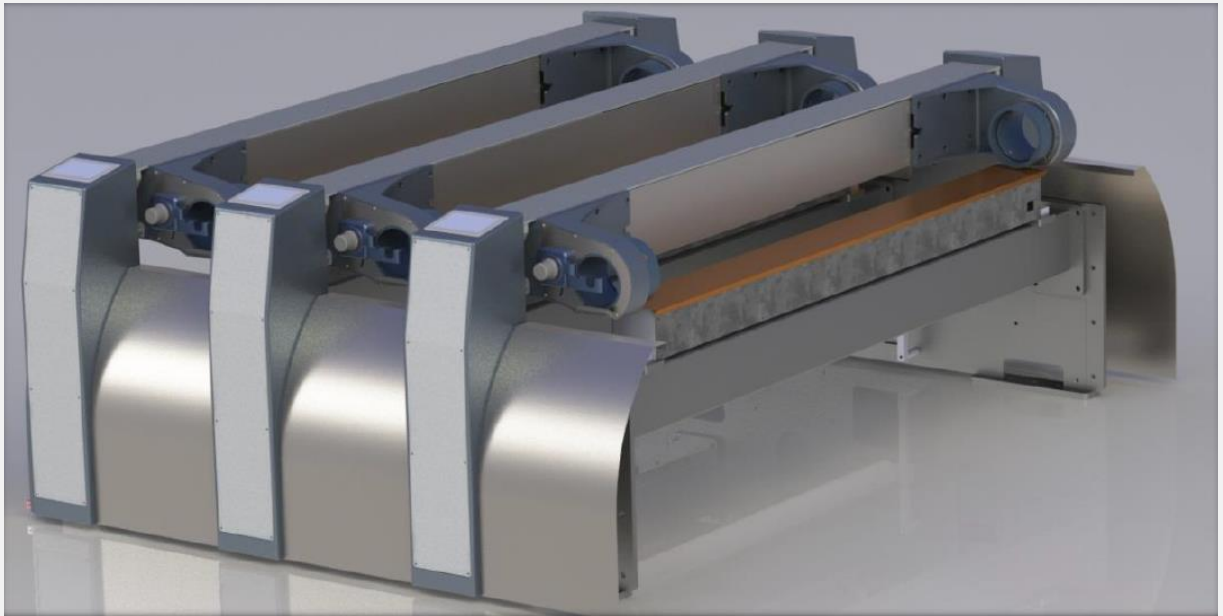


DavuD



A New
Rotary Screen
Printing Machine



Printing Modules

Each module has three printing head units.

Number of colors up to 24.

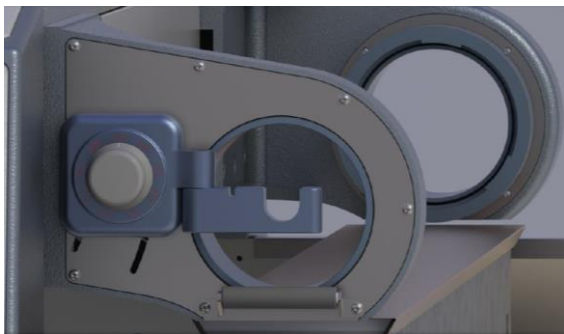
Step-less adjustment printing width.

Step-less adjustment printing height according to the thickness of fabric.

Linear magnetic system for high printing quality.

Optimum view onto the printed fabric between the printing heads.

Available printing widths: 1800,2400,2800,3200 mm.



Printing heads

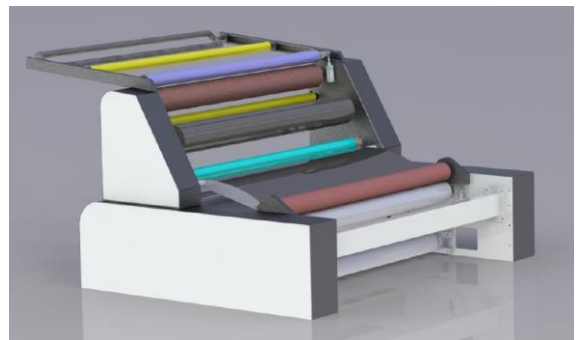
Multi repeat printing heads and magnetic squeegee holder.

No need to use any extra tools to achieve required repeat from 640 to 1018 mm repeat size.

(Optional: Blade squeegee option is for only 640 mm repeat size.)

Totally sealed and long-life lubricated and closed bearing printing heads.

Touch screen HMI on each printing head.

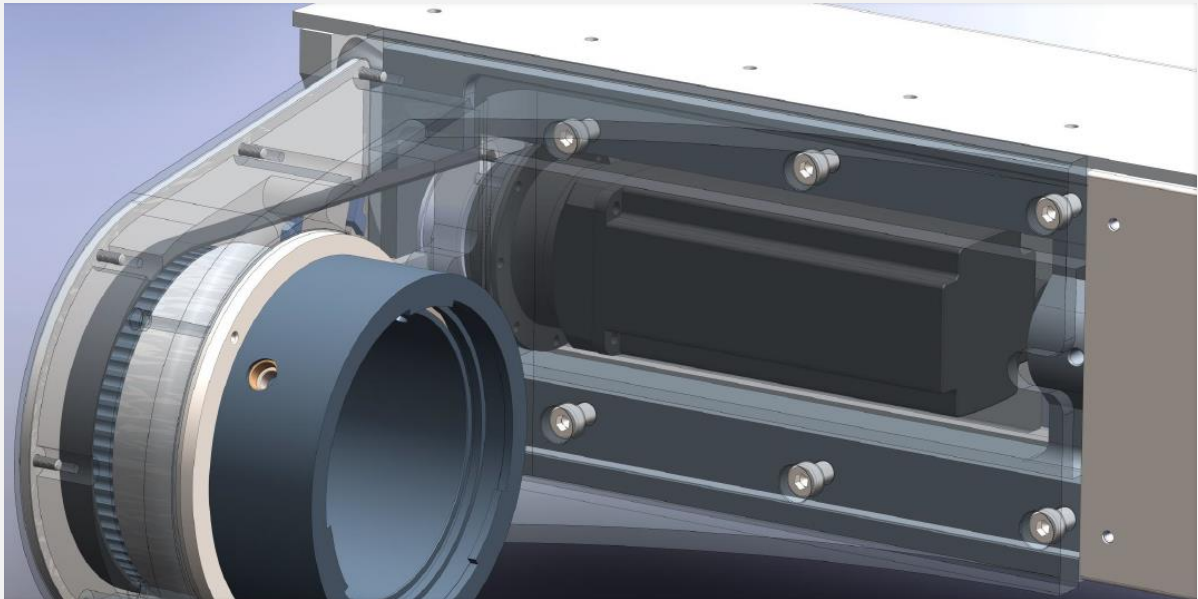


Compact cloth infeed device

Cloth cleaning device to remove lints and dusts from the printed fabric.

Load-cell controlled fabric tension measuring system with automatic pre-tension adjustment and design memory for any kind of textiles.

Web guiding and spreading system with segmented roller guider and spreading device.



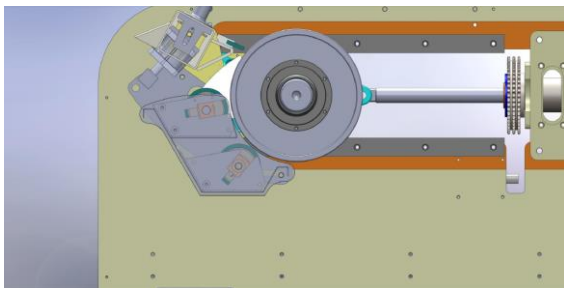
Screen Drive

One or both sided screen drive with BAUMÜLLER servo motor and NEUGART high precision planetary gear box.

High precision printing at any speed up to 90 m/min.

Digital synchronization between screen drive and blanket drive for high printing accuracy.

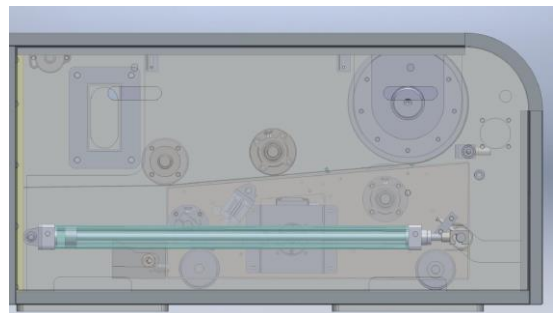
Easy to disassembly the printing heads from its unit, reducing maintenance job.



Glueing Device

Allows an even film of glue on the blanket surface. With an adjustable thickness of the glue film by means of the rubber squeegee. Works with water soluble glues.

The width of glue film is adjusted by changing the positions of the two sliding glue rollers to meet the width of the printed fabric, reducing the glue usage.



Blanket Washing Device

Two brushes and four rubber squeegees clean perfectly the blanket. Totally pneumatic and electronically controlled positioning on work, standby, maintenance modes.

The brushes equipped with inverter work with variable speed according to the printing speed.



Technical Details

| | |
|---|---|
| Multi Repeat | Can use each repeat sizes 640..1018 without additional accessories |
| Printhead Control Panel | 5.7inch Baumüller multi touch HMI |
| Repeating Adjustments (Length, Width, Angular, Height) | Touch screen panel Pneumatics and totally electronically controlled |
| Printing Width | Might be produced in the range from 1850mm to 3200mm by request |
| Number of Printheads | Might be produced in the range from 1 to 24 by request |
| Printing Method | Magnetic squeegee (Optional: Blade Squeegee for 640mm only) |
| Screen Drive Type | Independent motors at each printheads One or both sided screen drive according to printing width |
| Printhead Group | Modular group of 3 printheads |
| Printheads | Closed bearing system. Easily un/mountable for cleaning |
| Fabric Inlet | Load-cell controlled fabric tensioning |
| Glueing System | Glue cylinder with pneumatic squeegee Water soluble glue (polyvinyl alcohol) |
| Blanket Cleaning | 2 brushes with variable speed, 4 rubber squeegees |
| Operating Side | Left or right |
| Servo Motors, Drives and Automation | Leading automation devices producer Baumüller from Germany |
| Planetary Gearbox used in Printheads | Planetary, Neugart from Germany |
| Paint Pumps | Pneumatics (May changed by request) |
| Cabinet Dryer | 3 cabins with 3 passes (May changed by request) AC motor controlled air circulation and exhaust fans |